

ProKitchen WebPlanner

Give your clients the power to create their own custom kitchen and bath designs, right on your company website.

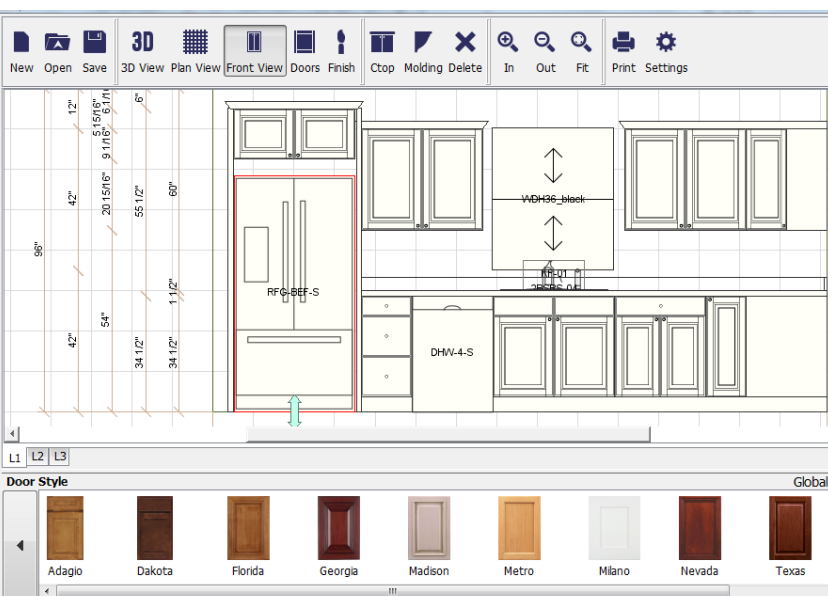




What is WebPlanner?

ProKitchen Software recognized an industry need for Kitchen & Bath design tools that create a collaborative experience between designer and client. ProKitchen has addressed this need by creating the ProKitchen WebPlanner, a web-based application that allows potential clients to design their own kitchen, right from the company websites of K&B design professionals.

ProKitchen puts the design in the hands of the homeowner, giving clients the tools to create beautiful designs without downloading any software. WebPlanner has been designed to run on all browsers and supports complete cabinet and appliance manufacturer lines with thousands of 3D shapes. It works hand-in-hand with professional design software product, ProKitchen Software, to **create a seamless design experience between professionals and their clients.**



Why choose WebPlanner?

Kitchen & Bath design professionals need new and innovative ways to build business, starting with creating a strong and loyal client-base. ProKitchen WebPlanner is a tool designed to do just that, **offering clients a hands-on design experience that they can't get anywhere else.**

As a web-based application, WebPlanner brings mobility and flexibility to an industry that relies heavily on products that fit a fast-paced and ever-changing business structure. WebPlanner users can create new designs, open and edit previously created designs, save designs to the ProKitchen server, and generate beautiful, photo-realistic 3D rendering images, without downloading any complicated software.



Generate leads

A design business relies on the loyalty of existing clients and the cultivation of new ones. WebPlanner is designed to give potential clients access to the innovative technology of ProKitchen Software, right on designer and manufacturer company websites. Anyone who visits will have the opportunity to design their future kitchen and/or bath, right within the browser, generating buzz and excitement for the company.

When a company chooses to use WebPlanner on their website, they also have the ability to see who uses the tool and gather useful follow-up information, allowing for the tracking and management of new leads.



Design collaboratively

A picture is worth a thousand words, but a good design is worth a million. WebPlanner puts the initial design in the hands of the client, allowing them to show designers exactly what they want. Anyone who uses WebPlanner will have full access to complete cabinet and appliance catalogs with thousands of 3D shapes. The application has been designed to run on all browsers and has an easy-to-use interface, creating the perfect environment for potential clients to get creative with their designs.



Integrate seamlessly

WebPlanner is designed to integrate seamlessly with ProKitchen Software, our state-of-the-art professional design software. Once a client completes a design in WebPlanner, it can be sent to a designer to complete the design to professional standards on ProKitchen Software. Designers can make product substitutions, fix any errors or design violations, price the design and send orders to manufacturers. **Transition through every step of the design process with ease, saving time and money from concept to creation.**





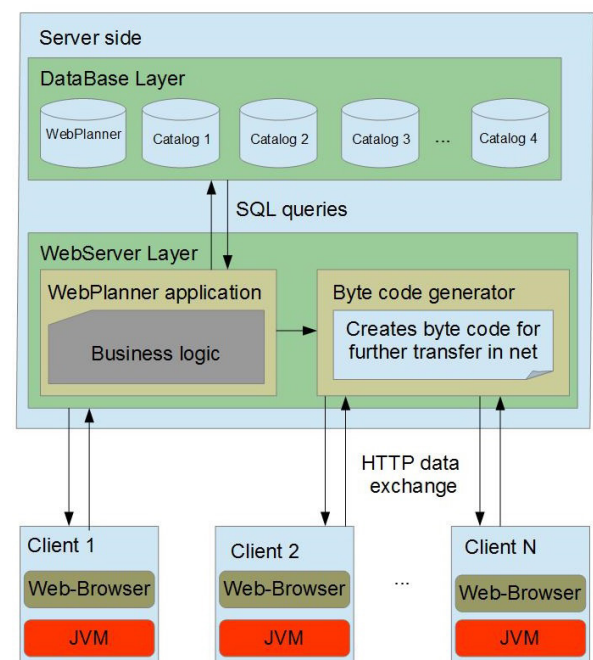
Understanding WebPlanner

WebPlanner is designed to run on the customer's server. Requests between the client and the server software are run through the HTTP protocols using RESTful Java framework. The server generates a response to those RESTful requests from multiple web clients. Those responses contain bytecode of requested objects to be used to reflect dynamic context within the browser by using a pre-installed Java plugin.

WebPlanner architecture

The architecture of the WebPlanner Server was made modular, with several major modules for the the WebPlanner Server including:

- ProK Net Admin module which is used by customers to manage users, designs and server configuration parameters
- ProKitchen Web Client Interface module contains a set of interfaces and metadata definitions that allows the ProKitchen Web Client to communicate with the Server
- Database layer of the Server stores information on the users, designs, and includes tables describing products of various manufacturers' catalogs available with the WebPlanner.



There are several other modules that are important for the WebPlanner implementation. Plugin interface modules constitute pluggable elements that allow adding different catalogs of home products. The WebPlanner Applet is the main dynamic element that performs design function within the browser client. The webserver contains a layer that implements the business logic of the application and is responsible for allocating additional resources for its clients. For example, it allocates graphical resources for web interfaces. This module is also responsible for translation of the configuration parameters of the application and responds to the REST requests from clients.

Because WebPlanner requires frequent requests between the Web clients and the Web Server, these requests were designed to run asynchronously. It was important to allow a livid client response even with the limited connectivity bandwidth for some of the users. Requests were optimized between Web client and the WebPlanner server by using a Data Transfer Object pattern. This optimization packs together multiple requests into a single HTTP package reducing significantly the traffic between the client and the server.



About the author



Alexander Kuzmin graduated from Chernihiv State Technological University with a Master's degree in Computer Systems and Networks. Mr. Kuzmin joined Real View LLC in April 2012 and now serves as the company's lead architect for the WebPlanner application. Leading the project since its inception, Mr. Kuzmin designed the modular architecture of the WebPlanner Server, as well as several other modules crucial for the implementation of the application. For example, he redesigned large elements of application databases making them amenable to client-server deployments. Mr. Kuzmin continues to make significant contributions to Real View's programs and proprietary technologies in a number of important areas.

About ProKitchen Software

ProKitchen Software was founded in 1999 with the goal of providing state-of-the-art 3D visualization capabilities to designers, retailers and manufacturers who were seeking premium service and increased customer satisfaction. We brought to the market a new 3D, stable program based on Java Technology, along with a simplified user interface, fully supported by both Windows and Mac operating systems. We pride ourselves on our ability to bring strong, healthy competition to the K&B software market, allowing manufacturers, designers and dealers to enjoy high-quality design software.



Other Products from ProKitchen Software



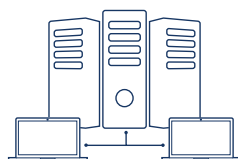
ProKitchen Software
2016



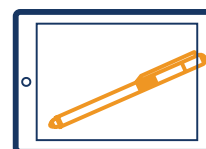
ProKitchen
Online



iProK3D Mobile
Application



ProKitchen NET



ProKitchen Stylus